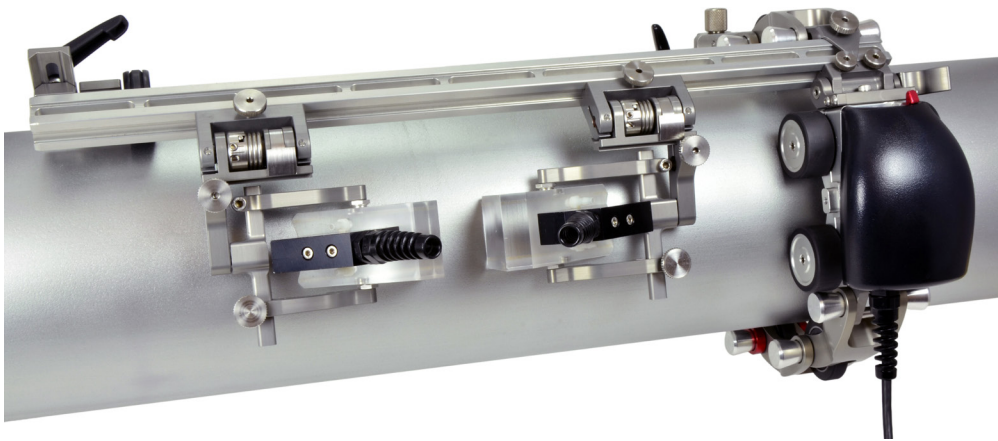




TWO PROBE PHASED ARRAY SCANNER

SINGLE WHEEL CHAIN, ONE AXIS ENCODING



The Rotix is a manual “chain” scanner. It is designed to provide encoded probe position of probes circumferentially around tubes and pipes. The Rotix is completely configurable for both phased array and traditional UT (Ultrasonic Testing) with single or multiple probes.

FEATURES:

- Adjustable Chain: 1.50" – 38.0" diameter. Links are designed with quick releases to easily be added or removed.
- Probe Holders: Adjustable to accommodate multiple probe and wedge combinations.
- Wheels: Coated with urethane to reduce slippage and the effects of rolling over foreign debris.
- Brake system: Locks scanner in required position.
- Umbilical: The modular and removable umbilical, can be used for one axis and two axis scans.
- Encoder: Integrated encoder is compatible with all standard instruments.
- Environmental Seal: O-ring gaskets and seals protect internal components from contaminants.

SPECIFICATIONS:

- Pipe Range: 1.50" – 38.0"
- Encoder Resolution: 19.2 counts/mm (5V DC TTL encoder compatible with all major UT instruments)
- Probe Holding Capacity: 2 Phased Array Wedges
- Umbilical Length: 5m
- Inspection Surface: Ferrous or Non-Ferrous materials

KIT CONTENTS:

- Rotix module with one axis encoder
- Chain links and buckle
- 5m Encoder Cable (2 axis compatible, optional encoder required)

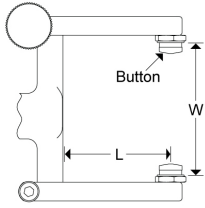
KIT CONTENTS: (CONTINUED)

- 45cm (17.7in) Frame Bar
- 20cm (7.9in) Frame Bar
- Stabilizer Wheel
- 2 Slip Joint Phased Array probe holders (Adjustable wedge size)
- 2 Long probe holder arm sets
- Probe holder spare parts kit
- 3mm hex tool
- Wrench for pivot button adjustment
- Irrigation kit
- Rugged carrying case



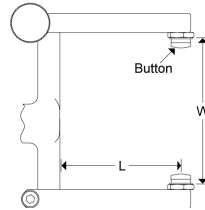
TWO PROBE PHASED ARRAY SCANNER

SINGLE WHEEL CHAIN, ONE AXIS ENCODING



TOFD PROBE HOLDER

Arm Style	Width (W)	Length (L)
Short	0.513" (13.0mm) - 1.772" (45.0mm)	1.450" (36.8mm)

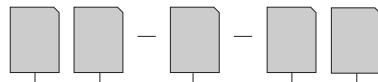


PHASED ARRAY PROBE HOLDER

Arm Style	Width (W)	Length (L)
Standard	0.513" (13.0mm) - 2.266" (57.6mm)	1.910" (48.5mm)
Long	0.513" (13.0mm) - 2.165" (55.0mm)	2.570" (65.3mm)

ORDERING INFORMATION

CEG002 -



Probe Holder Pivot Button Style
Encoder Connector Type
Max Pipe Diameter: 06, 12, 24, 38

ENCODER CONNECTOR TYPE

CONNECTOR TYPE	COMPANY/INSTRUMENT
B	Olympus - OmniScan MX / Zetec - ZIRCON, TOPAZ
C	Olympus - Focus LT / Zetec Z-Scan
D	Olympus - OmniScan MX2, OmniScan SX,
F	TD - Focus Scan, Handy Scan, Pocket Scan
G	Sonotron - Isonic
M	GE - USM Vision
U	Sonatest - VEO, PRISMA

Additional encoder connector types available

PIVOT BUTTON STYLE

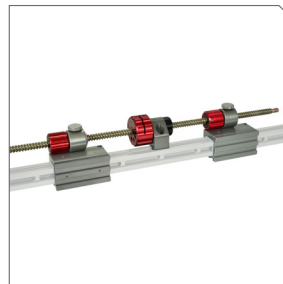
BUTTON STYLE	PIVOT HOLE SIZE	WEDGE TYPE
01	8.0mm (0.315")	Olympus PA
02	5.0mm (0.197")	Olympus TOFD
03	2.7mm (0.106")	Sonatest DAAH PA
04	9.5mm (0.375")	-
06	3.0mm (0.118")	-
07	2.3mm (0.090")	-
08	Conical Head	-
09	5mm (0.197") Internal	Zetec PA/TOFD

Additional encoder connector types available

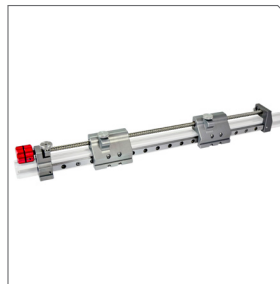
ACCESSORIES



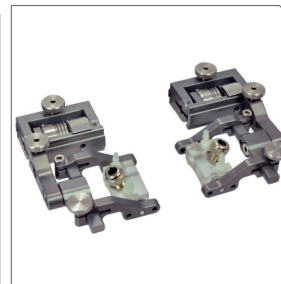
Zipper Tube Cable Mgmt. Kit
CES044-04.5



Slider PPS Kit
CJA002-45-2



Probe Positioning System Kit
DKA003-45-2



TOFD Probe Holder Kit
PHG017-B02



PPS Encoder
DKS009



Jireh Industries Ltd.
53158 Range Road 224
Ardrossan, Alberta
Canada T8E 2K4

ph: 780-922-4534

© 2013 Jireh Industries. All specifications are subject to change without notice. All brands are trademarks or registered trademarks of their respective owners and third party entities.

info@jireh-industries.com

www.jireh-industries.com